



# G SERIES

105-135 HP



**VALTRA**

**YOUR WORKING MACHINE**

# WE WORK HARD TO MAKE HARD WORK EASY

At Valtra our main focus is to know our customers, understand their needs and provide them with the best tractor experience. Our new G Series is the latest answer to our customers' demands. It's the small and compact all-rounder that enables you to sit back and enjoy peace of mind while getting the job done comfortably.



Form follows function. At Valtra it's as simple as that. This is the backbone and design philosophy behind every machine we make. For the G Series, the key drivers are a compact machine and a strong design concept. It's the best choice when you don't need a big machine but a smart,

agile and robust one. Even with high power levels, the dimensions have been kept as compact as possible for a highly efficient 4-cylinder machine.

The engine, chassis, cab and transmission – all the physical components of the

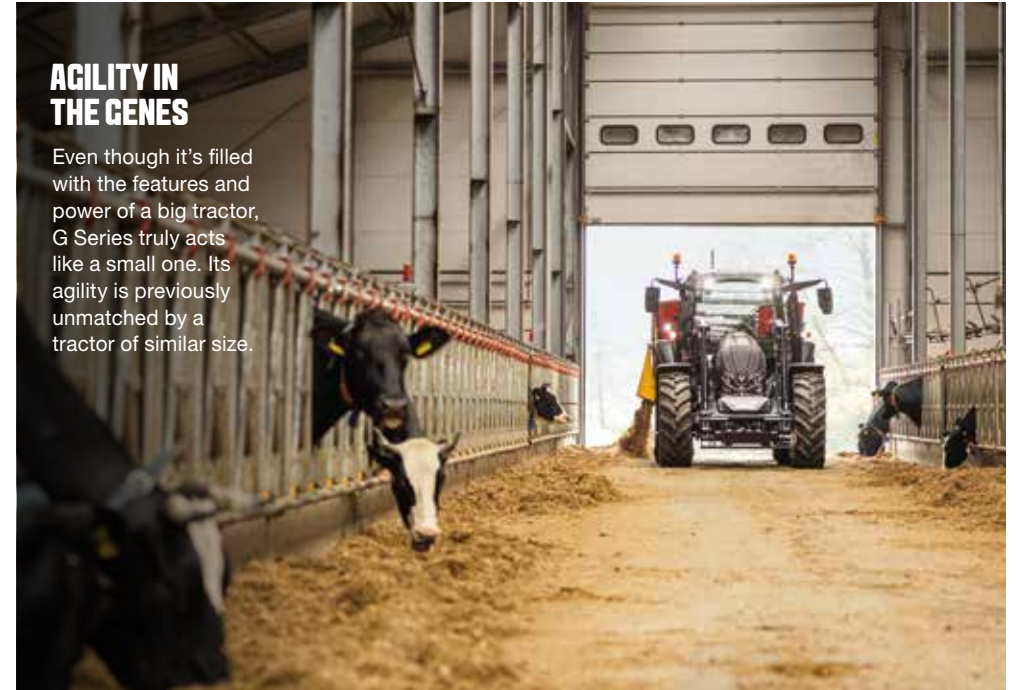
G Series tractor are seamlessly integrated by design. But it doesn't end there.

Our Connect, Care and Go services are designed with the same ultimate target in mind – to help you to get your work done easily and comfortably while having peace of mind.



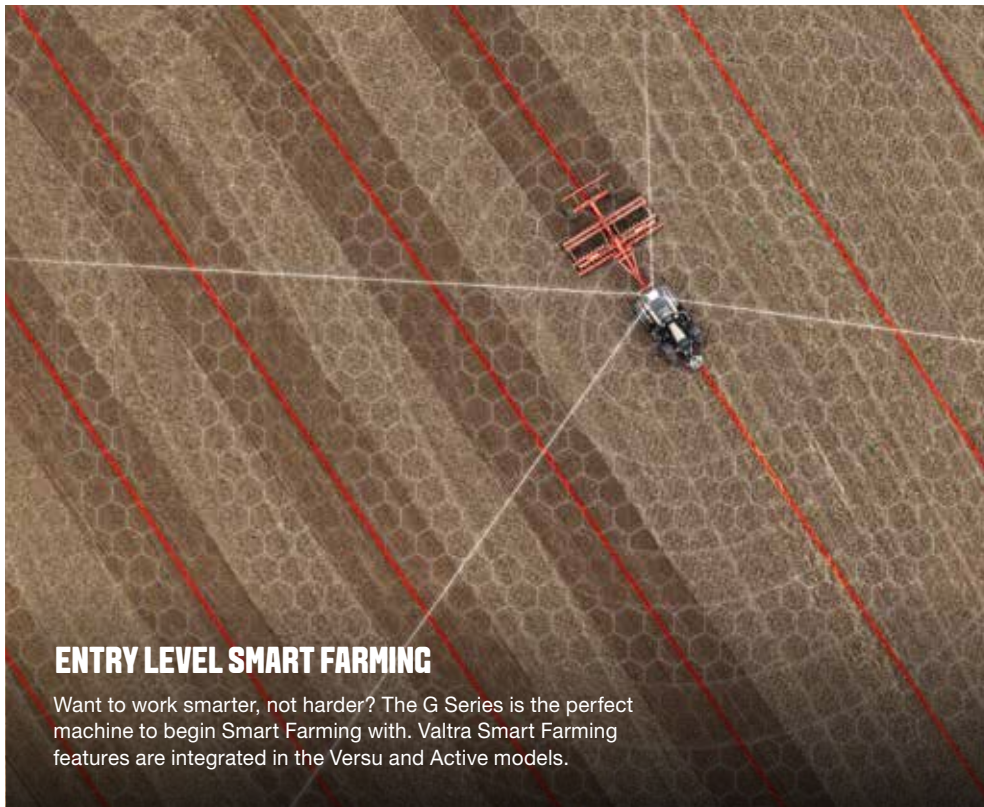
### THE SWISS ARMY KNIFE

The G Series is the true multi-tool of the tractor world. While compact in size, it's packed with powerful hydraulics, easy-to-use Smart Farming features and the power for implements of various sizes.



### AGILITY IN THE GENES

Even though it's filled with the features and power of a big tractor, G Series truly acts like a small one. Its agility is previously unmatched by a tractor of similar size.



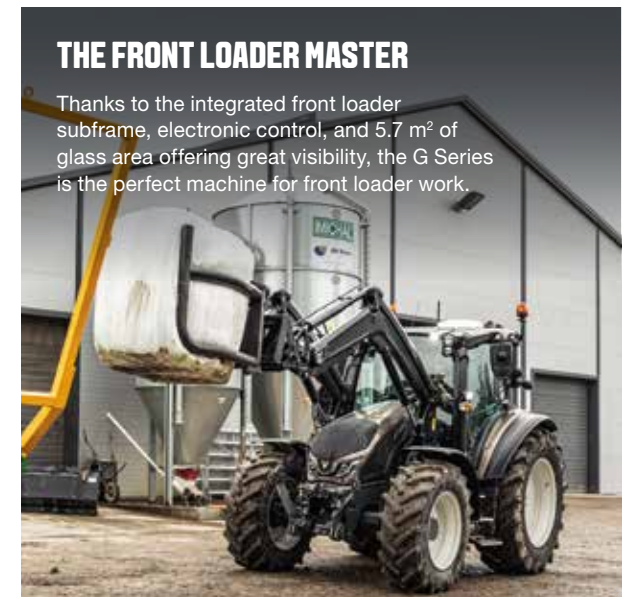
### ENTRY LEVEL SMART FARMING

Want to work smarter, not harder? The G Series is the perfect machine to begin Smart Farming with. Valtra Smart Farming features are integrated in the Versu and Active models.



### THE FRONT LOADER MASTER

Thanks to the integrated front loader subframe, electronic control, and 5.7 m<sup>2</sup> of glass area offering great visibility, the G Series is the perfect machine for front loader work.



# THE FINNISH ALL-ROUNDER

The G Series brings together compact dimensions and a lightweight, agile design. Whether on the field or in the farmyard, or in a completely different environment, this is your reliable working machine.



## 1. GO EASY ACCESS

Easy and safe entry and exit to the cab and wide, self-cleaning steps.



## 2. SEE SPACE AND VISIBILITY

A comfortable cab with plenty of room for two people and great visibility to all directions, including a large roof window. Cab's total glass area is 5.7 m<sup>2</sup>.



No matter the task, the G Series offers a full-featured, multi-purpose solution for your everyday needs. It has an advanced power lift and effective working hydraulics. The HiTech model offers open centre hydraulics, while Active and Versu offer a closed centre /Load sensing system. High pump capacities (100/110 l/min)

guarantee speed, ease of use and full-featured implement control with a simple UI including an electric joystick.

Also, features needed for modern implements, like power beyond or ISOBUS are available. With the option packages you can modify your tractor to fit your needs.



## 3. DRIVE SMOOTH START TO DRIVING

The Valtra shuttle enables a smooth and safe start with integrated park position and easy to use controls.

## 4. WORK

### COMPACT AND VERSATILE

Compact dimensions, like maximum height of only 2.8 m and a reasonable weight of 5 tons make for a full-featured, versatile tractor suitable for a variety of tasks.

## 5. LOAD

### FRONT LOADER SPECIALIST

G Series is a front loader specialist with a heavy-duty integrated subframe and excellent operator visibility. Loaders up to lift capacity of 2.1 tons or lift height of 4.2 m.

## 6. IMPLEMENT

### FULL FEATURED IMPLEMENT CONTROL

Advanced 50 kN power lift and hydraulics with up to 110 l/min flow including electric joystick control for front loader and easy implement control via the adjustable hydraulics and ISOBUS.

## 7. AUTOMATE

### STATE-OF-THE-ART POWERSHIFT

Powershift revolution with great speed availability with 6 speed powershift and fuel-saving Valtra automatics such as the speed-based AUTO1 automatic shifting, hill hold and engine braking control.

## 8. CONTROL

### THE BEST FOR THE DRIVER

Valtra ARM or SmartTouch armrest control is included in all models. Technologically advanced but always practical controls that are ergonomic and easy to use.

## 9. FARM

### SIMPLE YET SMART

Easy to use but precise: Customer-oriented technology features such as Valtra Guide to increase productivity.

## 10. BE SAFE

### WE GOT YOUR BACK

User-friendly and simple service concept: Fast service checks to start the day, 600 h service interval and Valtra Connect, Care and Go.



# THE FRONT LOADER MASTER

You wanted a front loader specialist, and now you have it. The G Series comes with an integrated heavy duty subframe, a lock-and-go loader attachment and a modern clean beam design with enclosed pipework. The visibility is excellent, including a high visibility roof. Curved parallel lift rods follow the tractor bonnet line. Our fully tailored loader portfolio has electronic controls in all versions.



1. Modern, minimalist beam design with enclosed pipe work
2. Curved parallel lift rods that follow the tractor's bonnet line
3. Excellent visibility and a full view of the tools
4. Load sensing (LS) hydraulic pump with up to 110 l/min flow
5. Roof window for outstanding upfront visibility
6. Valtra ARM or SmartTouch user interface
7. Hydraulic assistant
8. Optional Live 3 function
9. Lock-and-go system for quick loader attachment and detachment
10. Integrated heavy-duty subframe



# YOUR SMART TECHNOLOGY BUILT IN

Valtra Smart Farming is a set of technologies that work seamlessly together – Valtra Guide, ISOBUS, Section Control, Variable Rate Control and TaskDoc®. A key design principle of our technology solutions is the ease of use.

All smart functions can be controlled from our unique SmartTouch armrest with just two taps or swipes.

A better quality of life is at your fingertips – literally.

In case you opt for an Active, you can have the SmartFarming features and control them through the SmartTouch Extend screen.

Valtra Guide helps to improve efficiency, reduce overlap and enhance operator comfort, whatever the farm size. Valtra's famous easy-to-use Smart Farming solutions are available in Versu and Active models.

## VALTRA GUIDE

Valtra Guide is our auto-guidance solution that has been developed based on real user feedback. We wanted to make sure that recording and configuring waylines and boundaries are as easy as it gets. Valtra Guide is your go-to companion when you want to work more efficiently and get more from your fields while worrying less about gaps, overlap and unnecessary driving on the field.

Valtra Guide uses GPS guidance to steer your tractor for you. The automatic steering follows waylines precisely and reduces overlaps, saving you time, fuel and money. Because you don't have to focus on the steering, you'll be able to concentrate on your implement, work longer days, cover more ground and still be relaxed.



## ISOBUS

With Valtra SmartTouch and ISOBUS, you can work with any ISOBUS-compatible implement, from any manufacturer. SmartTouch lets you connect implements quickly and easily, plus it gives you the high level of control that precision farming demands. The ISOBUS standard (ISO 11783) is what makes this possible.

ISOBUS makes compatible implements "Plug and Play", so when you connect the implement to your Valtra tractor, all the relevant machine data is uploaded to the terminal immediately.

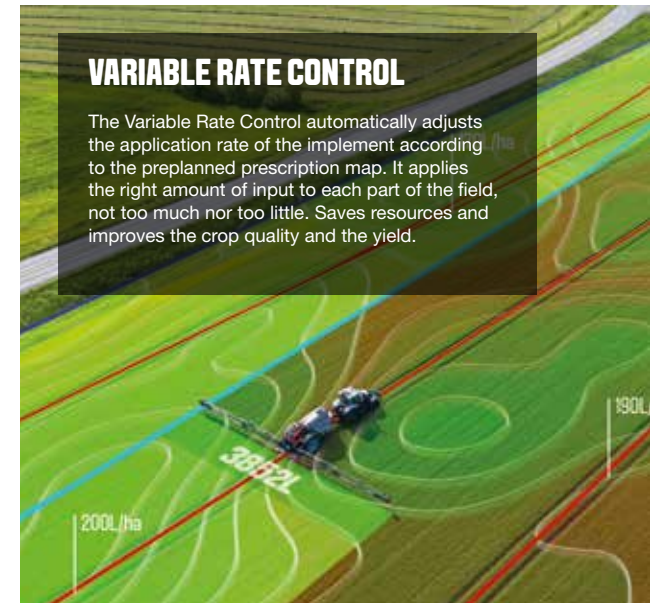


## TASKDOC® PRO

With TaskDoc® Pro there's less paperwork. Just start working and all the documentation you need will be created automatically. When you're finished, the documentation will be wirelessly transferred to your farm management system (FMS). Plan variable rate maps in the farm office and transfer them to your tractor for automatic control. TaskDoc® Pro is easy and intuitive.

## VARIABLE RATE CONTROL

The Variable Rate Control automatically adjusts the application rate of the implement according to the preplanned prescription map. It applies the right amount of input to each part of the field, not too much nor too little. Saves resources and improves the crop quality and the yield.



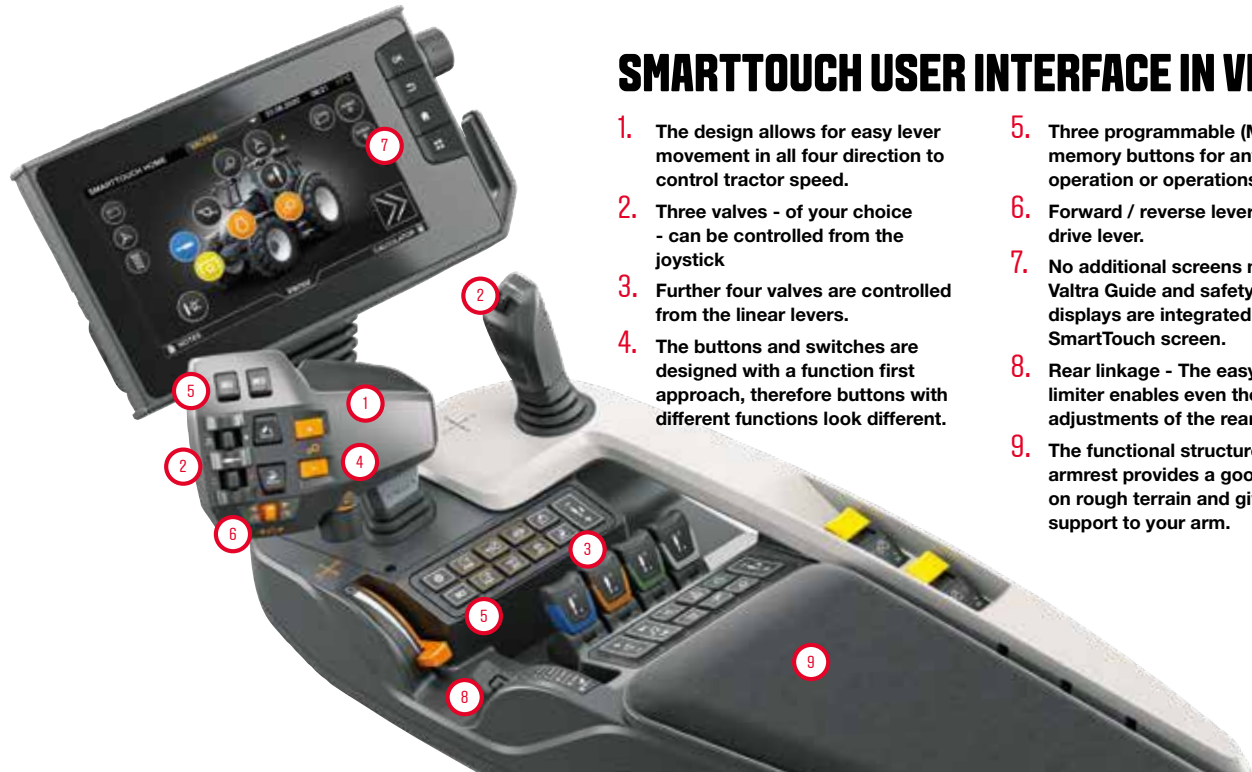




### VALTRA SECTION CONTROL

With Section Control your tractor and your implements are precisely and automatically controlled to deliver the optimum seed and fertiliser rates to each part of each field. This helps you reduce input costs, improve yields and maximise your profits.

## SMARTTOUCH USER INTERFACE IN VERSU



1. The design allows for easy lever movement in all four directions to control tractor speed.
2. Three valves - of your choice - can be controlled from the joystick.
3. Further four valves are controlled from the linear levers.
4. The buttons and switches are designed with a function first approach, therefore buttons with different functions look different.
5. Three programmable (M) memory buttons for any tractor operation or operations (U-pilot).
6. Forward / reverse lever at the drive lever.
7. No additional screens needed - Valtra Guide and safety camera displays are integrated into the SmartTouch screen.
8. Rear linkage - The easy-to-use limiter enables even the smallest adjustments of the rear linkage.
9. The functional structure of the armrest provides a good grip on rough terrain and gives good support to your arm.



### VALTRA CONNECT

Valtra Connect is our telemetry solution that records tractor activity and GPS movements, all the time. It can display history and real time data on your mobile device and you can access the data anywhere, anytime. Using this data, you and your Valtra service partner can anticipate maintenance needs, and react faster to solve minor issues and avoid extra visits to your authorised service centre.

Connect is standard on the Versu and optional for the HiTech and Active models.

FIRST 3 YEARS FOR FREE WITH VERSU



**AGCO telemetry for customer**  
Fully customer and user driven user experience



Easy menu navigation



The settings are logical and easy to set up with swipe gestures. All settings are automatically stored in the memory.



The 9" touchscreen, large controls, settings and functions are easy to understand.



You can assign any control to operate any hydraulic function, including front and rear hydraulic valves, front and rear linkages and the front loader.



It's easy to configure the work lights using the 9" touchscreen. There are also on/off buttons for the work lights and beacon in the armrest.



Profiles for operators and implements which can be easily changed from any screen menu. All the setting changes will be saved in the selected profile.

# UNBEATABLE VALTRA TRANSMISSION AUTOMATICS

Get moving smoothly with the Valtra shuttle. All G Series models have integrated park position and AutoTraction to help you get a smooth start. The new 6 speed Powershift gives you better work speed possibilities than before. The revolutionary Valtra automatics include features like automatic shifting – AUTO1 offers a speed pedal function and adjustable engine braking while AUTO2 gives the operator freedom to select shift limits. There's even a hill hold function integrated to all G Series models, and in addition, our top-of-the-range Versu model offers a CVT-like lever driving function.

Valtra Powershift is the smoothest transmission on four wheels. Take your foot off the clutch and you are automatically in control – with Valtra you can drive your Powershift tractor like a CVT. In automatic modes you shift automatically based on your acceleration and torque requirements – and you always get the best fuel economy.

Versu models have a revolutionary, patented hydraulic assistant, giving you more hydraulic output automatically, either stationary or when driving, with no effect on driving speed. No other Powershift can do it! Available also in Active and Hitech if electrical front valves are fitted.



## VERSU

- Revolutionary Powershift : 6PS
- Load Sensing hydraulics with 4 electronic spools
- SmartTouch armrest
- 4 models G105-G135

## HITECH

- Revolutionary Powershift : 6PS
- Open-centre hydraulics with 3 mechanical spools
- Valtra ARM armrest
- 4 models G105-G135

## ACTIVE

- Revolutionary Powershift : 6PS
- Load Sensing hydraulics with 3 mechanical spools
- Valtra ARM armrest
- 4 models G105-G135

# NEW STAGE V COMPACT ENGINES

The G Series is built from the ground up as a 4-cylinder tractor



As the powerhouse of Valtra tractors with 70 years of experience, AgcoPower compact engines offer great power and torque feature. The compact 4.4 l engine with small dimensions enable a low bonnet with great visibility. The all-in-one engine after-treatment system cleans

the exhaust according to stage V standards. The compact unit is located wholly on the right side of the tractor, under the cab, where it keeps not only the exhaust gas clean but also the visibility field open. A raised engine air intake allows clean, cold air to enter with reduced restriction.



# YOUR BEST TRACTOR EXPERIENCE

You work hard. You operate in challenging and diverse environments, running five jobs at once, putting in long hours and hauling distances. It's our job to make your tractor experience the best it can be. Our easy Connect, Care & Go service concept offers unrivalled practicality that eases the daily operation and maintenance without adding costs for the owner. The best tractor experience is not just the machine, or the moment you purchase it – we, our partners and our vast dealer network are here to help you through the whole lifecycle of your tractor.



# PEACE OF MIND. IN YOUR HANDS.

We believe in a seamless connection between our customers, dealers, machines and the Valtra factory. When connected you can select the desired service and warranty packages to meet your expectations and requirements. We take care of you, so you can take care of your business.

## Valtra Connect

[www.valtraconnect.com](http://www.valtraconnect.com)



## CONNECT

TRACTOR DATA,  
INFORMATION  
AND SERVICES.

### STAY CONNECTED ANYWHERE, ANYTIME

By choosing Valtra you are connecting with a team of professionals that help you make the most of your business. You can contact your local support through our online customer portal which also gives you 24/7 access to tutorials, contractual information and services around your machines. The Valtra Connect telemetry solution records tractor activity and GPS movements, all the time. It can display history and real time data on your mobile device and you can access the data anywhere, anytime. Using this data, you and your Valtra service partner can anticipate maintenance needs, and react faster to solve minor issues and avoid extra visits to your authorised service centre.



## CARE

FACTORY EXTENDED  
WARRANTY.

### TOTAL PEACE OF MIND

With Valtra Care extended warranty contracts you can find ultimate peace of mind and security against additional repair costs of non-wearing parts. Care allows you to set your overheads when you purchase your Valtra tractor, or when the standard warranty expires. They are flexible, offering three excess levels – 0€, 290€ or 590€ and are available up to 5 years or 6,000 hours.



## GO

MAINTENANCE  
CONTRACT.

### MAXIMISE YOUR UPTIME

Fix your costs at the point of purchasing your Valtra machine and ensure the optimum performance, while guaranteeing efficiency and maximise the residual value of your machine! Valtra Go service contracts ensure regular and thorough maintenance which will prolong the reliable operation of your Valtra tractor. Maintenance costs are small compared to repair costs resulting from lack of maintenance. The Valtra Go service package includes all prescribed maintenance work bookable up to 10,000 hours for new and used machines.

# FINANCIAL STABILITY WITH COST CONTROL

There aren't two farms that are exactly the same. They each have unique features and individual challenges. That is why we offer a flexible solution to help you stay on top of your costs.

A farm's cashflow can often be unpredictable and affected by many external factors. Seasons are different and prices vary, so staying on top of finances can be tricky. For the sake of being successful and having peace of mind, you need financial stability and full control of your costs.

Machinery and equipment are both a vital part and a major expense on any farm operation. The Valtra G Series comes with

innovative Smart Farming features, the number one key to being cost effective and efficient together with **Connect, Care and Go.**

The financing of a Valtra machine is now easier and more flexible than ever before. With the **Rent, Buy, Lease** programme offered by **AGCO Finance**, we give you the chance to build a financing solution to meet your needs.

**LET'S TALK MORE!**



**BUY**

TRACTOR OWNERSHIP  
WITH OPTIONAL  
CONNECT, CARE AND GO



**RENT**

SHORT TERM RENTAL  
WITH INCLUSIVE  
SERVICES



**LEASE**

OPERATIONAL LEASE  
WITH OR WITHOUT  
SERVICE CONTRACT



### YOUR OWN VALTRA DEALER

Your Valtra dealer represents the best tractor and implement expertise in your area. He understands the technical aspects of your tractor and the challenges you face. You can always turn to your dealer and receive the best service from consultancy, maintenance, repair and spare parts to the purchase of a new piece of equipment. Valtra dealers are independent entrepreneurs. AGCO audits its dealer representatives each year to ensure that you get the best possible service.

### GENUINE PARTS AND HIGH QUALITY ACCESSORIES - ALWAYS AVAILABLE

Valtra's comprehensive spare parts service supplies the parts you need – as fast as by the next morning. This helps you keep your tractor productive during the busy ploughing and harvesting seasons. The AGCO Parts label ensures that you are getting original Valtra spare parts that have been thoroughly inspected and tested.



### AGCO MAKES THEM UNBEATABLE, WE MAKE THEM AFFORDABLE.

At AGCO Finance we tailor your personal finance solution based on your cash flow and operation. Tell us how much you can afford on a monthly basis and we will create a flexible payment schedule according to your business needs, taking seasonal variations into account.

As a full service provider we also offer

financing services such as leasing, rental and insurance. Our services may vary between countries, so please check our website or your nearest dealer for the available offering.

### VALTRA TEAM

Valtra Team is our customer magazine, published twice a year. Each issue contains useful information about the



latest innovations and the most efficient working methods. You can also access the magazine's archives online and read articles dating back to 2000.

### AGCO ACADEMY

Tractors and related technologies, especially precision farming technologies, are developing at a rapid pace. The Valtra Academy continuously trains Valtra dealers and service technicians, so that the first-class and up-to-date expertise that you get from your Valtra dealer today will continue to meet your needs in the future.

### VALTRA COLLECTION

The Valtra Collection offers high-quality clothing and accessories for work and leisure. The materials and details are carefully selected. The clothing reflects Valtra's modern design language, with light, yet extremely durable materials that combine style and functionality.

# OPTION PACKAGES

We offer ready-made Option Packages for easy selection of features you need for you G Series

The Option Packages range from improved comfort features and easier applications handling all the way to advanced precision farming technologies.

In addition, you can complete your working machine with the Front loader package and finish it with Valtra Unlimited customisation options.

Take a look and see which Option Package suits your needs best.

## COMFORT

The Comfort package takes your comfort zone to another level. This package is available for all G Series HiTech, Active and Versu models. Options included in the Comfort package:

- Front Axle Suspension
- Suspended cab and seat, Air Suspended +
- Work Light Premium or Premium+ with LED lights
- Reversing Lights Automatics



## TECHNOLOGY

The Technology package adds features that make connecting and operating the G Series and your implements easier and more productive. The Technology package is available for all G Series Active and Versu models. Options included in this package:

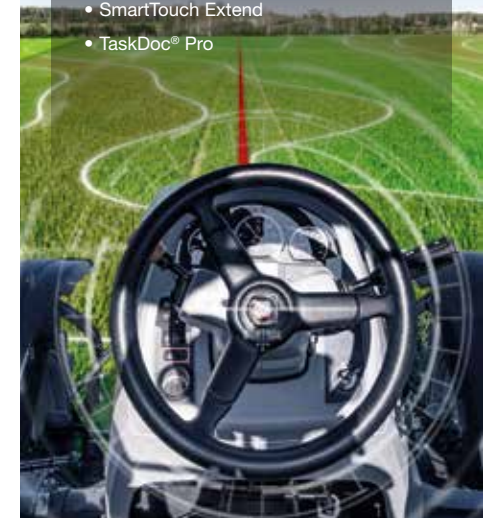
- Full Valtra Guide: one of 4 options with Novatel or Trimble antenna
- ISOBUS rear
- Advanced (Asr, with radar) (with Versu only)
- Power socket set



## TECHNOLOGY PRO

The Technology Pro package is the top of the range and includes everything you need for Smart Farming. The Technology Pro package is available for all G Series Active and Versu models. Options included:

- Wayline Assistant
- Precision farming: One of 4 Section Control or Section Control & Variable Rate options
- SmartTouch Extend
- TaskDoc® Pro



1. SELECT YOUR OPTION PACKAGE

TECHNOLOGY PRO



TECHNOLOGY



COMFORT

2. SELECT YOUR FRONT LOADER FRONT LOADERS



3. CUSTOMIZE TO YOUR NEEDS VALTRA UNLIMITED

## FRONT LOADERS

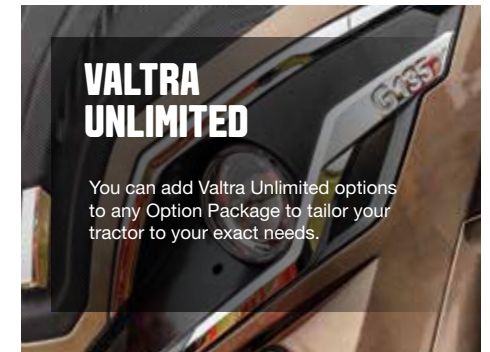
The G Series is excellent for front loader work, and the Front loader package is here to unlock that feature. The tractor's great visibility and good turning radius are perfectly complemented by this option package which includes:

- Factory fitted and tested front loader & subframe set



## VALTRA UNLIMITED

You can add Valtra Unlimited options to any Option Package to tailor your tractor to your exact needs.





# YOU FIND THE WORK. WE'LL FIND THE WAY.

When you choose a Valtra machine, both your tractor dreams and real, unique requirements can be met and fulfilled.

**Valtra Unlimited** means your own individual tractor built according to specifications given by you, with the design and comfort that you need to perform in any environment. Whether you are looking for a tractor for road maintenance or municipal tasks, or if you are in search of specific features for farming or other purposes, Valtra Unlimited is the way to achieve it. It is your working machine for a reason.

With Valtra Unlimited, the possibilities really are just that – unlimited. What do you need? What have you been dreaming of? Done and done. We make it happen.

A special paint job can give your tractor a distinctive look that turns heads. Whether you need a certain colour scheme for municipality work and special authorities or want to let your creativity go wild, Valtra Unlimited ensures that your needs are met. Inside, Valtra Unlimited tractors can be equipped with durable, high-quality leather steering wheels and seats that guarantee driving comfort and give a final finishing

touch to the appearance of the cab. Interior panels can also be customised, and more special requests can be fulfilled quickly.

## FACTORY FITTED

All the accessories and equipment fitted by the Valtra Unlimited studio are covered by the factory warranty, and we also supply all the servicing and spare parts for them.

The accessories and equipment available from the Unlimited Studio include additional lights, central lubrication, stereo systems and much more.



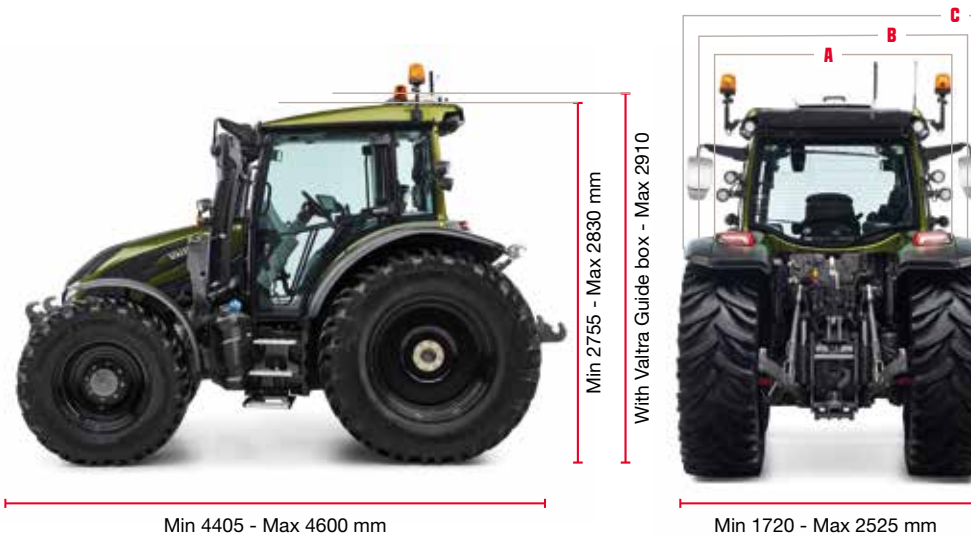
# G SERIES TECHNICAL SPECIFICATIONS

105 - 135 HP



MODEL	MAX POWER		MAX. BOOST POWER		MAX. TORQUE NM		
	HP	kW	HP	kW	STD	BOOST	
G105	105	78	110	82	440	470	
G115	115	85	120	90	460	510	
G125	ECO	115	86	125	93	518	555
	STD	125	93	130	97	520	540
G135	135	100	145	107	550	560	

See specifications table for further engine data. BOOST power is available for field and road (B5 and higher speeds). Sigma Power available for all PTO use but not in 540E.



Own working weight 5140 kg

Max total weight 9500 kg

Mudguard widths:

**A:** forest 1858

**B:** narrow 2034

**C:** wide 2310

MODEL	HITECH • ACTIVE • VERSU
	G105-G135
<b>DIMENSIONS WITH 540/65R38 + 440/65R28</b>	
Wheel base [mm]	2550
Length (without front linkage)	4452
Transportation length, with front linkage	4514
Height, without Valtra Guide box, [mm]	2805
Width, max [mm]	2380
Turning radius [m]	4.36
Ground clearance mid [mm]	443
Ground clearance rear (no hitch) [mm]	460
Weight (full tanks, + driver) [kg]	5140
Weight distribution Front/Rear [%]	41/59
Max total weight [kg]	9500
Fuel capacity, basic [l]	200
Fuel capacity, steel tank [l]	160
AdBlue, capacity [l]	21
Min tyre size (rear SRI 750)	420/85R34 + 340/85R24
Max tyre size (rear SRI 825)	600/65R38 + 480/65R28



MODEL	HITECH	ACTIVE	VERSU
	G105-G135		
<b>ENGINE</b>			
Agco Power engine type	44 MBTN-D5		
No of cylinders	4		
Engine volume, (litres)	4.4		
Engine speed at max power [r/min]	2000		
Engine nominal speed [r/min]	2200		
Engine speed at max torque [r/min]	1500		
* G125 Eco-mode max power at [r/min]	1750		
* G125 Eco-mode max torque at [r/min]	1250		
Idle speed [r/min]	850		
Low idle (shuttle lever on P) [r/min]	700		
Oil-change interval (h)	600		
Emission grade	Stage V		
Exhaust cleaning system	DOC + DPF + SCR		
<b>TRANSMISSION</b>			
Number of gears	24+24R		
With creeper	48+48R, Option		
Number of work areas	4 (A, B, C, D)		
Number of powershift gears / area	6		
STD speeds at 2200 r/min [km/h]	1.3 - 43		
Top speed 43 km/ reached at [r/min]	1910		
*EcoSpeed model, 43 km/ reached at [r/min]	1640		
Lowest creeper speed at 2200 r/min [km/h]	0.11		
Front axle suspension	hydraulic, option		

MODEL	HITECH	ACTIVE	VERSU
	G105-G135		
<b>HYDRAULICS</b>			
Lifting power rear, (max kN)	60		
Lifting power entire lift range, [ kN]	50		
Lifting power entire lift range, [Front, kN]	option, 30		
Type of Hydraulics	Open center	Load Sensing	
Pump capacity max [l/min]	100	110	
Transmission and hydraulic oils	Common oil		
Number of mechanical service valves rear	2 or 3	--	
Number of electrical service valves rear	--	3 or 4	
Number of ON/OFF valves rear	Optional 1		
Number of electrical service valv. FRONT	2,3 or 4		
Oil available for implement [litres]	24 (with extra filling ...44)		
<b>PTO</b>			
2 Speeds @ engine speed [r/min]	540@1920 + 1000@1964		
3 Speeds @ engine speed, option [r/min]	540@1920 + 540E@1560 + 1000@1964		
3 Speeds+ Ground speed option	with GS ratio 29.23		
Front PTO option, speed @ eng. speed [r/min]	1000@1920		
<b>INTERFACES</b>			
Valtra ARM (armrest control)	STD	--	
Valtra SmartTouch User Interface	--	STD	
Valtra Connect	option	STD	
Valtra Guide options	--	Option	



You take on extremes each day.

You work in challenging environments, climates and landscapes.  
You work hard, putting in long hours and hauling distances.  
You work with jobs that ask for speed, power and precision.

To be in complete control, you deserve a visionary partner.  
To be always connected, you need the smartest machine.

That is why you trust Valtra.

We work hard to make hard work easy.  
We find new ways to solve your challenges.  
We make machines that are tough on the outside  
and smart on the inside.

Our machines are built to last.  
Built to work. Built for you.

**YOUR WORKING MACHINE**

**VALTRA** is a worldwide  
brand of **AGCO**.

**Valtra Inc.**  
Valmetinkatu 2  
FI-44200 Suolahti  
Tel. +358 (0)2045 501

[www.valtra.com](http://www.valtra.com)  
[www.youtube.com/valtravideos](http://www.youtube.com/valtravideos)  
[www.facebook.com/ValtraGlobal](http://www.facebook.com/ValtraGlobal)

The tractors that appear in this brochure may be equipped with special options.  
Changes possible - all rights reserved.